

# ALL TYPES OF DOORS & INTERIOR MATERIAL



**datta**  
**enterprises**

[www.dattadoor.com](http://www.dattadoor.com)

## ABOUT US

Datta Enterprises was established in 1988 and is a dealing, distributor, manufacturer and Importer of a complete wide range of world-class doors and best quality products throughout India.

The focus has always been to provide extraordinary service to the customer and understand the needs in the holistic market. This attitude has helped us nurture the entity to command a grand reputation in the market.

Datta Enterprise owes a gradual growth in the market over time ranging the variety of products today with around 150-200 Dealer networks in Western Maharashtra, North Karnataka, and Goa region as well as our esteemed Architects, Interior Designers and Builders in Kolhapur, Sangli, Satara, Ratnagiri and Sindhudurg District through our two showrooms, one from Kolhapur and another one at Sangli.



**datta**  
enterprises

Sanjay Kumar Patil

## SOCIAL ACTIVITIES

**1992-2016:** Rotary Member and all avenues Director Rotary club of Kolhapur centre.

**2002\*:** President Kolhapur Plywood Dealer Association.

**2009:** Member of IIID in 2010. Treasurer in 2011-12, Secretary in 2012-2015 & followed by Vice President Trade 2013-14 in the period of NATCON.

**2010\*:** Member of Kolhapur Chamber of Commerce & Industries.

**2010\*:** Formed an association for South Maharashtra Plywood Dealer Association & Became a founder President.

**2011-15:** Worked as a Treasurer at Kolhapur Chamber of Commerce & Industries.

**2016-18:** Appointed as a secretary at Kolhapur Chamber of Commerce & Industries.

**2018\*:** Elected as a Vice President of Kolhapur Chamber of Commerce & Industries.

**2020\*:** Became a member of the Maharashtra Chamber of Commerce, Industries and Agriculture.

**2021\*:** Later appointed at Governing Council of M.C.C.I.

## THE JOURNEY SO FAR (\*RECOGNISATION)

**1988:** Started with Bricks, Sand, Stone, Instant Neeru (Sanala), Sintex Tank and Doors, Netlon Mosquito Net.

**1989:** Taken a Distributorship of Loggie Aluminium Grill (Ajmera Group) as well as manufacturing of sliding windows.

**1990:** Got another Distributorship of Supreme Furniture i.e. Chairs, Tables, Teapoy, Sofa, etc.

**1992:** Got Dealership of Bison Panel -Cement Bonded Particle Board (NCL Group).

**A 1993\*:** Got Best Performance Dealers Award for Bison Panel.

**1995:** We got the Distributorship (C and F. agent) of Bison Panel and started a new Firm exclusive, in the name of Prajakta Distributors for this product.

**1997:** Our showroom was then shifted from a small rented place to our new own place of around 300 sq. Ft.

**1998:** We got Distributorship of Masonite Moulded Doors (Masonite Corporation USA)

**2002:** We again extended our office of 300 sq. Ft. In front of our showroom itself.

**A 2004:** Best Performance Distributor Award for Highest Sale in India for Bison Panel.

**2004\*:** Took Distributorship Glo Door Aqua (Pratham Wood Products Pvt. Ltd) for Bathroom Doors.

**2006:** Opened a new firm namely Enhance India with a Partnership for importing steel Doors and wooden Panel Malaysian Doors and started one more office in Mumbai Chatkopar area for this firm.

**A 2007\*:** Received Rashtriya Udyog Ratna Award for excellence in their respective field for National Economic Growth through individual contribution from CEDR.

**2009:** Rented a place & started a new showroom in Sangli.

**2010:** Got Dealership of Scantling Frame.

**2012:** Took Distributorship of Cello Bubble Guard sheet (Wim Plast Ltd.)

**2013:** We brought our very own new showroom of 1000 Sq. Ft. and was Shifted to same at 100 Ft. Road, Sangli, for Sangli branch.

**2014:** Got Distributorship of JK Laxmi Gypsum Plaster.

**2015:** Another Distributorship of Alstone New Product of WPC Sheet.

**2016:** Introduced Rockwool Insulated Sheet of ROXUL Rockwool Insulated India Pvt. Ltd.

**2017:** Imported Fab Locks from Taiwan and sold under the name of Datta ABS exclusively only for the Maharashtra and Goa region.

**2022:** Shifted and renovated our Kolhapur Office & Showroom together in a spacious area under the same roof.





### Bison Panel (Cement Bonded Particle Board)

A Cement Bonded Particle Board made in technical collaboration with Bison Werke of Germany, combines the strength of cement and workability of wood. Made out of 62% cement 28% wood particles & 10% chemicals.

#### Properties:

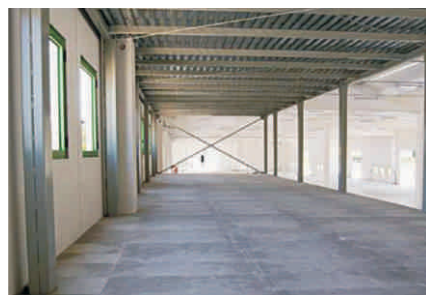
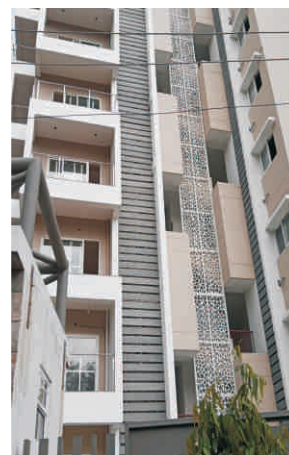
Fire resistant, Weather Resistant, Termite proof, Sound Insulation, Dimensionally stable, smooth surface, wood workability.

#### Applications:

Partitions, False Ceiling, Doors, Flooring mezzanine, Kitchen platforms, Cupboard, Wardrobe, Duct cover, Roofing, Facia or Eves Board.

#### Thickness:

6mm to 25 mm,  
Size 8'x 4', 10'x 4' (on requirement)





### Glo Guard Steel Doors :

- Steel Door has a wood grain finish and looks perfectly wooden. (Door Face of 0.8 mm thick, Cold rolled steel plate both side & Door Frame 1.5 mm thick) with paper honey comb in between.
- Multi-layer UV treatment with transparency film to door surface. It has high corrosion resistance and excellent rub resistance.
- Each door has 4 Nos. inbuilt S.S. Hinges & Multi Locking System with twelve lock points & five Master Keys, along with the two Dummy Keys, One peep hole & Bottom Rail is S.S. finish.

**Thickness:** 50mm to 70 mm

**Sizes:**

2050 x 880mm

2050 x 960mm

2050 x 1050mm

2300 x 880mm

2300 x 960mm



Glo Guard Steel Door

**duttu**  
enterprises



**MASONITE**

**Anand (Masonite) White Moulded Doors :**

Hot pressed, Solid Core, Phenol Bonded,  
Made of Preservative treated and seasoned  
timber with high density wooden fibre plates  
imported from Masonite Corporation, USA.

The only HDF Board made with Phenolic resin.  
Water and Termite resistance.

Door side Lipping is compulsory  
for longer life of door.

These Doors are ideally suitable for  
Main door, Indoor, Balcony and terrace door,  
Consulting Door (Glass Cutting), Safety Doors,  
Bathroom Doors etc.

Colour is White Primer coated,  
customer can paint or polish

as per his requirement.  
Size available as per customer's choice.

**Designs :** One Panel broad,  
One Panel Narrow, Two Panels Arch,  
Two Panels Round,  
Four Panels, Six Panels and  
Safety Grill Doors etc.

**Thickness :**

30mm, 32mm, 35mm, 38mm, 40mm





# datta

## **Datta ( HDF ) White Moulded Doors**

- Hot pressed, made of High Density Wood Fiber board.
- The Inner Wood is Pine Wood or Hard wood & Particle Board which is chemically treated and seasoned. (Economy range)
- These doors are ideally suitable for indoors i.e. Hall, Kitchen and Bedroom etc.

- Colour is White Primer coated, customer can paint or polish as per his requirement.
- Sizes available as per customer's choice:

**Designs:** 2 Panel Arch, 2 Panel Round, 4 Panel, 6 Panels and Milano.

**Thickness :** 30 mm, 32mm, 35mm



Datta ( HDF ) White Moulded Doors



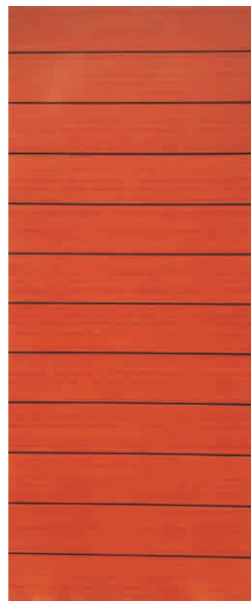
**datta**  
enterprises

# datta

## Datta Laminated Doors:

- 0.8 to 1.00 mm thick Laminate Sheet on both side ISI, ISO Grade Good quality Flush Door with side lipping.
- Thickness and Size as per your requirement and variety of designs are available.
- These doors are ideally suitable for Indoor i.e. Bedroom, Hall and Kitchen etc.
- Doors can be used for bathroom also using PVC bidding patti for side lipping.

**Thickness :** 30 mm + , 32mm+,35mm+, 38mm+



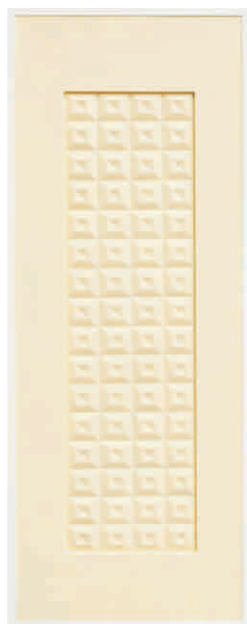


### Arihant PVC Doors:

OVI Series Arihant Doors are made of Highly Engineered Plastic Moulded Sheet with PU Foam insulation and paper honey comb puff filler outer border is powder coated Aluminium section of end thickness 31 mm. This door is water proof, Termite proof and Borer proof, sound proof and absolute Eco Friendly. These doors are used only for Bathroom and Toilets.

### Size:

- 83" X 29"
- 7 different designs
- 5 colours available



Arihant PVC Doors

**duttu**  
enterprises



# datta

## 1. Datta PVC Profile Door

- Profile hallows PVC Door, Border a PVC Channel will be 30 mm thickness with different colours are available.
- These doors are ideally used for Bathroom and Toilet.

**Thickness :** 20 mm



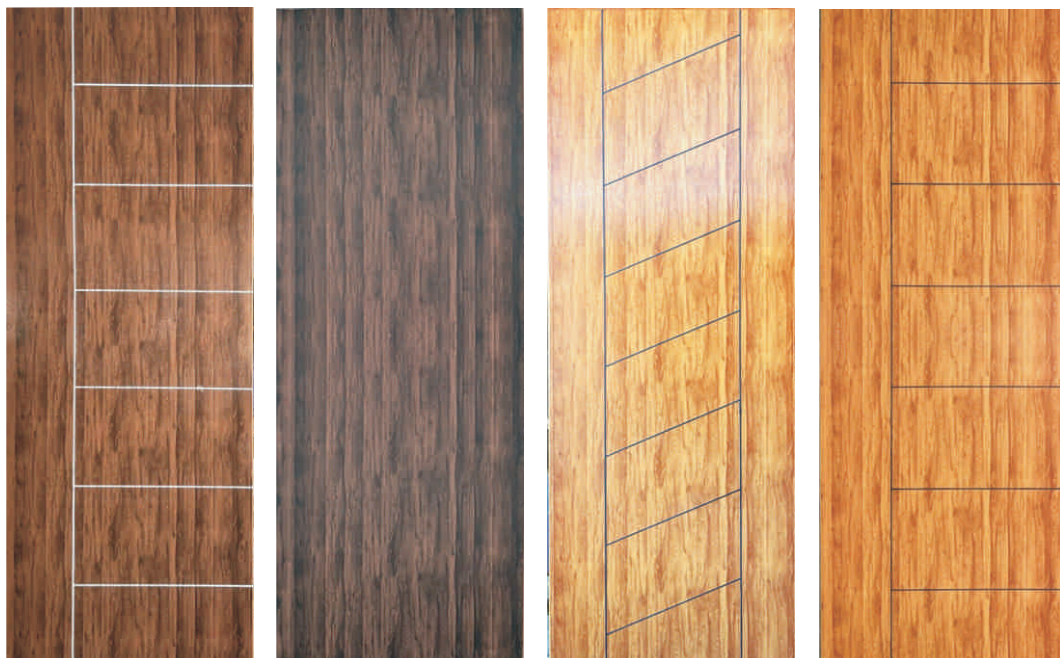
Sliding & Folding PVC Doors

# datta

## 2. Datta UPVC Door:

- Profile hallows UPVC Door with 'C' channel will be 30 mm thickness with different shades in matt finish.
- These doors are ideally used for Bathroom and Toilet.

**Thickness :** 28mm





### Gujcon W.P.C. Door Frames :

WPC Door Frame manufactured with Wood polymer composite material. These frames are durable, low maintenance and ready to use. 100% water and termite proof, Borer Proof, Fire retardant and perfect choice for outdoor as well as indoor framing. An advantage of this frame is ready to paint in any colour you want, 100% solid. Substitute for granite frame. This Frame is made of 1000 cbm density with excellent screw holding, one piece section of 70x45, 90x45 and 135x45 etc.

These frames are ideally used for Bathroom, Balcony and Terrace.



### Scantling Wooden Door Frames: (Gujcon Brand)

Our Scantling door frame is made using Phenol Formaldehyde resin. The product made using Phenol Formaldehyde is water proof. The infill timber that we use is kiln seasoned and chemically treated Pine Wood is good screw holding capacity due to its high fibrous structure. Due to its high fibrous nature, the bonding between timber and cross core is very good. We use Phenol Formaldehyde resin supplied by ARCL Organics Ltd., Kolkata. ARCL Organics makes the best Phenol Formaldehyde resin in the country and their resin is ISI marked product. Also, all entities of our door frames scantlings are made from Pinewood. The frame, infill timber and 2.5mm cross core is of 100% Pine. We use 0.5mm Gurjan as the top surface.

These frames are ideally used for indoor i.e. Main Door, Hall, Living Room, Kitchen, Bedroom etc.

**Size:** 40 mm

**Thickness:** 5", 6", 7" and 8"

Scantling Wooden Door Frames

Gujcon W.P.C. Door Frames

**duttu**  
enterprises



### Cello Bubble Guard P.P. Sheet:

Cello Bubble Guard is an extruded Polypropylene Sheet used as protection board that replaces traditional floor protector materials like plywood & gypsum board.

- Fully Reusable
- Impact Resistant
- Waterproof
- Easy to cut & shape



## datta

ABS SMART LOCK **PLUS**

### Datta ABS Smart Lock or Fab Lock :

Which is specially used for latching and locking of bathroom doors replacing the ordinary aldrop, tower bolt, and handles made out of low quality plastics. This lock is ideally suitable for PVC profile Door, Fiber Doors, Solid PVC Door used for Bathroom and Toilet.

Different shades available to match any interior concepts.





# ALSTONE

## Alstone WPC Sheets :

Alstone board is Wood Polymer Composite is also called as WPC. It is composed of Natural wood and Thermoplastic. It is best substitute of Wood and Plywood for its durability and thermoplastic for its flexibility, It is 100% Termite, Borer, Water proof, Anti Fungal, anti bacterial, Flame retardant, ultra high screw holding, non toxic panel and Environment friendly.

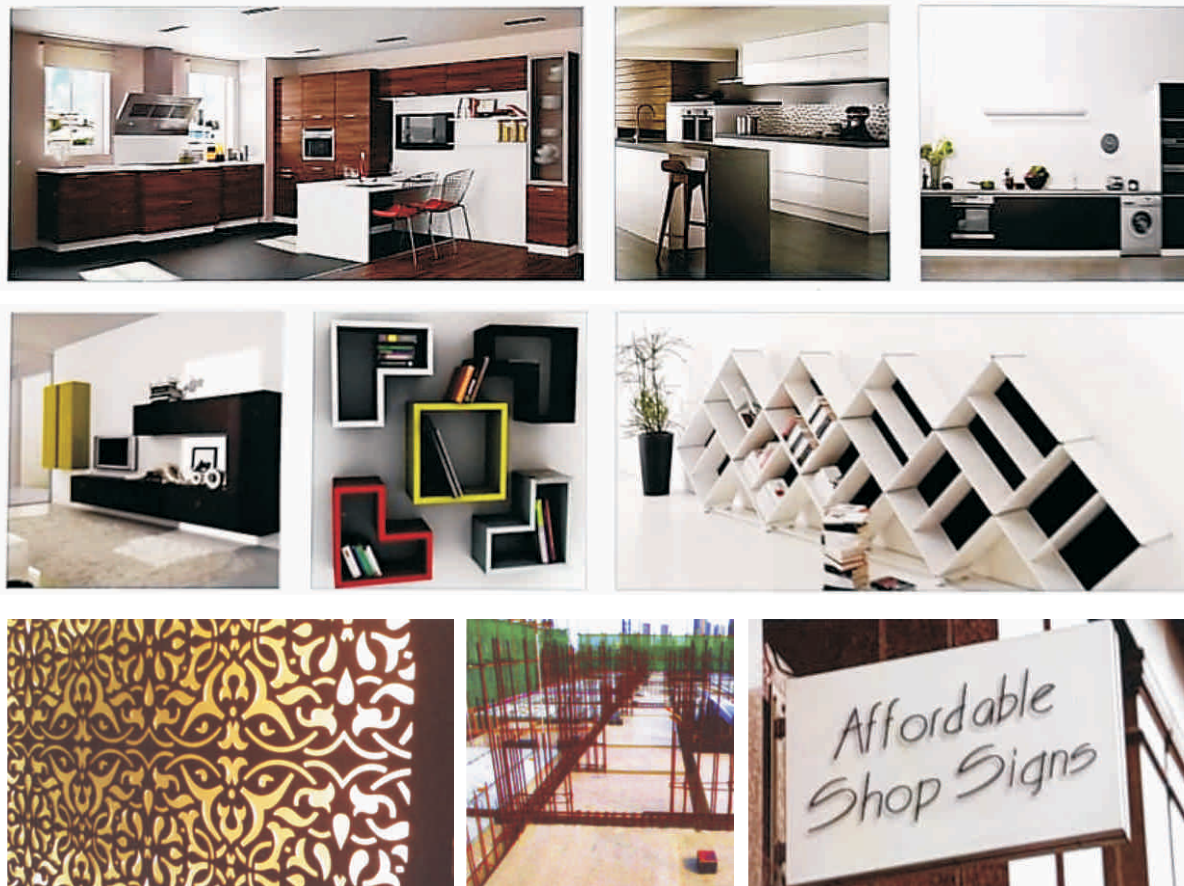
**Size:** 8' X 4'.

### Thickness:

4 mm, 6mm, 8mm, 12mm, 16mm, 18mm, 25mm and 30 mm.

### Colours:

White and Natural wood.



Alstone WPC Sheets

**duttu**  
enterprises

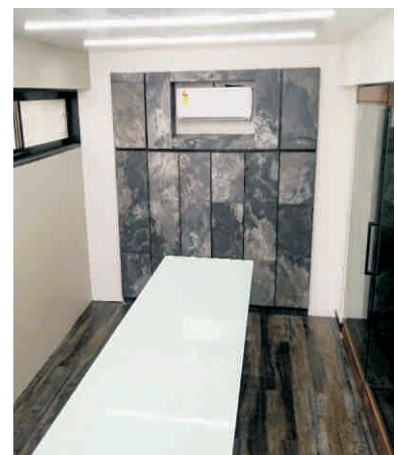
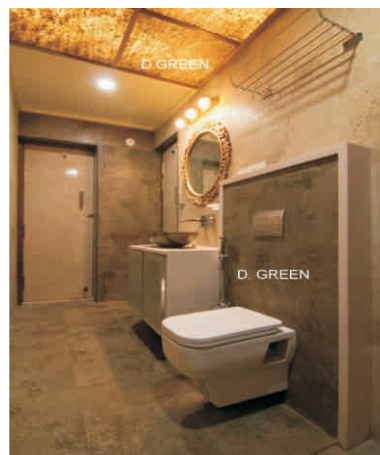
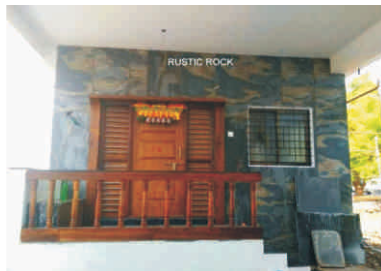


The flexibility of Rockply sheets enables you to cut, bend and paste the veneer wherever you desire – it is as easy as that. It is lightweight, easily transportable and installable, and extremely versatile to use. It can be applied to a range of surfaces such as wood, MDF, drywall, tiles, fiberglass, metal and concrete surfaces for stunning textured finishes.

- Lighter in weight Easy to transport Faster to install
- No compromise over compact urban spaces
- More economical to use than full-dimension stone veneer
- Can be applied to any substrate - Concrete, Metal, Plywood, Masonry, Drywall, Cement Excellent alternative to Heavy stones, Chemical paints, Wooden paneling, Wall papers

- Technically, it is a flexible STONE VENEER
- Hand crafted from 100% Natural stones
- Extremely versatile applications
- Timeless art
- Integrate living spaces with touches from Mother Earth

- Interiors
- Walls
- Ceilings
- Light panels
- Backsplashes Furniture
- Bathroom/ Shower area
- Decorative panels / Pillars Exteriors
- Commercial venues/ Offices







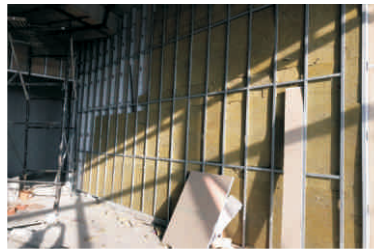
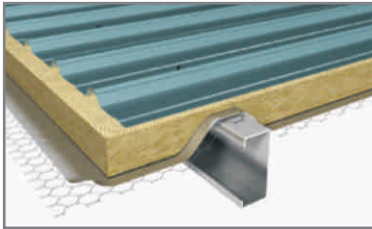
### **Roxul Rockwool stone wool Insulated sheets :**

- Rockwool stone wool products are made of basalt, a volcanic stone, Non combustible with a melting point more than 1000 C.
- They are particularly suitable for the thermal insulation, fire protection and sound reduction/absorption.

### **Applications :**

- Dry Wall Partition applications in Hospitals, Cinemas, School, Office, residential and industrial buildings.
- Ideally suitable for metal ceiling, facades, walls, roofs etc.

Single Skin Roof System



Roxul Rockwool stone wool Insulated sheets

**duttu**  
enterprises



## BIRLA AEROCON

### **Birla Aerocon Panel or Bison Dry Wall Panel:**

This Panel is made of both sides 4 mm thick cement fibre board in between flay ash and cement sandwich.

#### **Properties:**

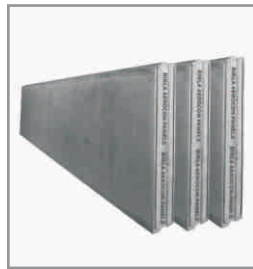
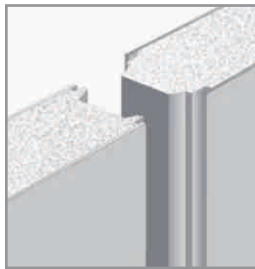
Fire resistance, Sound Insulation, Immune to water damage, Reusable, Long Life, Rapid Assembly and Light weight.

#### **Thickness:**

50 mm, 75 mm and 100 mm.

#### **Applications :**

Full and Half height Partitions, Prefab Structure, Boundary Walls.



## SHOWROOM - KOLHAPUR



## SHOWROOM - SANGLI



**datta**  
enterprises

**Head Office :** 2nd Lane Rajarampuri, Behind Janata Bazar Road,  
Kolhapur-416 008.(M.S.) Phone : **(+91-0231) 2524317, 2520608.**

**Branch :** Prafulla Building, Vikas Chowk, 100ft Road,  
Opp. Hotel Dimond, Sangli-416 416. Ph.: **0233-2621161.**

**E-mail:** [dattaent@rediffmail.com](mailto:dattaent@rediffmail.com) • **Website:** [www.dattadoor.com](http://www.dattadoor.com)